

JET

Jet -

Distal Jet



(5)



Distal jet:

(II₁)
(II₂)

JET

① Distal Jet

0,6



20%



1



	180	.012	.055				
()	1	2	3	4	5	6	7
Max	20	40	62	76	105	126	180
Min	17	33	52	69	94	115	

	240	.014	.055				
()	1	2	3	4	5	6	7
Max	32	62	101	140	172	205	240
Min	21	55	90	125	158	195	

JET

180

240 -

855-503 - Bondable Connector - qty 10

855-502 - Bayonet Director - qty 10

855-504 Standart Bayonet - qty 10

NITI 855-506 240 gm NITI Spring - qty 10

855-507 180 gm NITI Spring - qty 10

Lingual - Sheath - qty 10 852-141

855-508 Activation Lock and Screw - qty 10

855-510 Distal Stop - qty 10

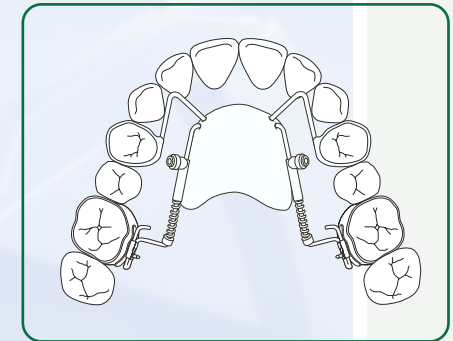
.050 Hax Wrench - qty 1 855-515

855-505 - Transpalatal Connector - qty 5

Dr. Aldo ... and Sig. Mauro Testa



the distal **JET**



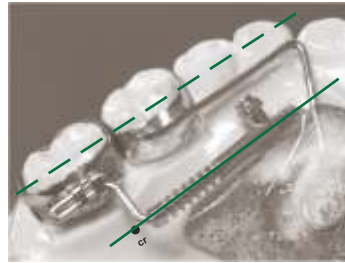
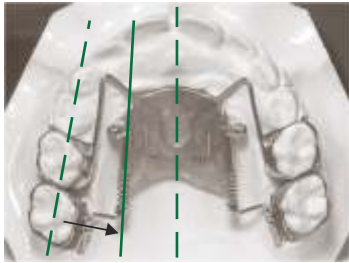
AMERICAN ORTHODONTICS

DISTAL JET

855-500



Distal jet,



(CR).

1

5°

« »



①

②

③

④

⑤

⑥

⑦

⑧

⑨

⑩



Distal jet -

⑪



DISTAL JET

①

②

③

④

⑤

4

⑥

Distal Jet

⑦

⑧

⑨

(.1).

(.2).

(.3 .4).

